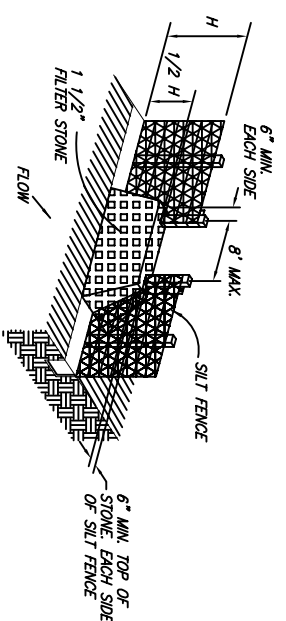


SILT FENCE DETAIL

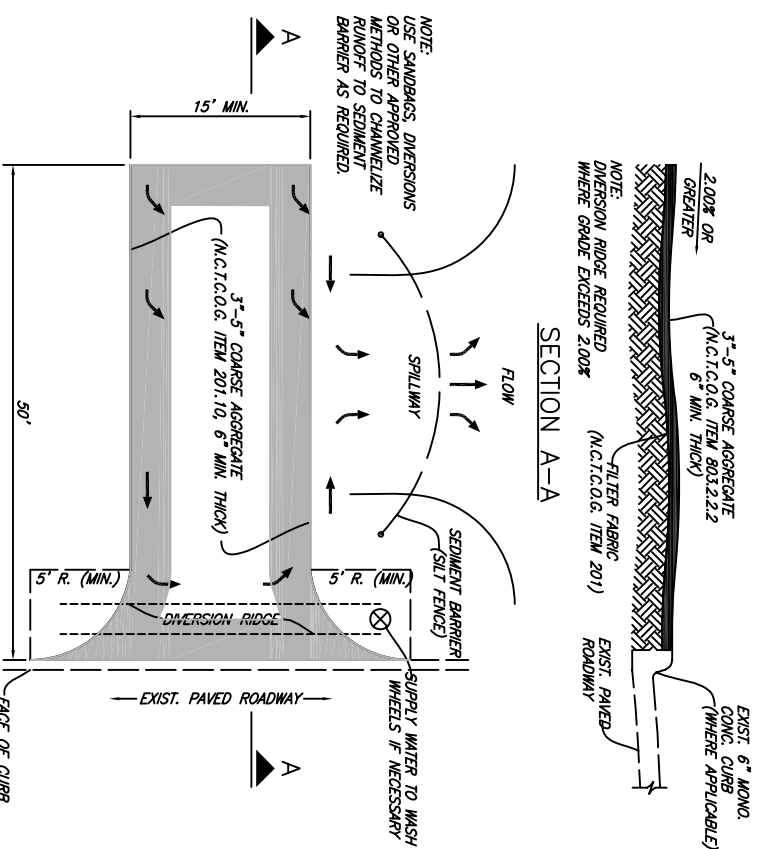


STONE OVERFLOW STRUCTURE

LOCATION AS CALLED FOR IN PLANS

EROSION CONTROL

- NOTES:
- 1) THE CONTRACTOR SHALL INSPECT SILT FENCE WEEKLY AND AFTER MAJOR RAIN EVENTS TO ENSURE THAT THE DEVICE IS FUNCTIONING PROPERLY AND MAINTAIN IN ACCORDANCE WITH NCTCOG ITEM 201.
 - 2) THE CONTRACTOR SHALL REMOVE SEDIMENT FROM BEHIND FENCE WHEN THE DEPTH OF SEDIMENT HAS BUILT UP TO ONE-THIRD THE HEIGHT OF THE FENCE ABOVE GRADE.
 - 3) THE CONTRACTOR SHALL INSPECT THE BASE OF THE FENCE TO ENSURE THAT NO GAPS HAVE DEVELOPED AND RE-TRENCH AS NECESSARY.
 - 4) THE CONTRACTOR SHALL INSPECT FENCE POSTS TO ENSURE THAT THEY ARE PROPERLY SUPPORTING THE FENCE. IF NECESSARY, THE CONTRACTOR SHALL RESET AND ADD POSTS.
 - 5) IF FILTER FABRIC IS RIPPED, DAMAGED OR DETERIORATED, THE CONTRACTOR SHALL REPLACE IT IN ACCORDANCE WITH THE ORIGINAL SPECIFICATIONS AND DETAILS. (MAINTENANCE OF THE SILT FENCE SHALL BE AT THE CONTRACTORS OWN EXPENSE)



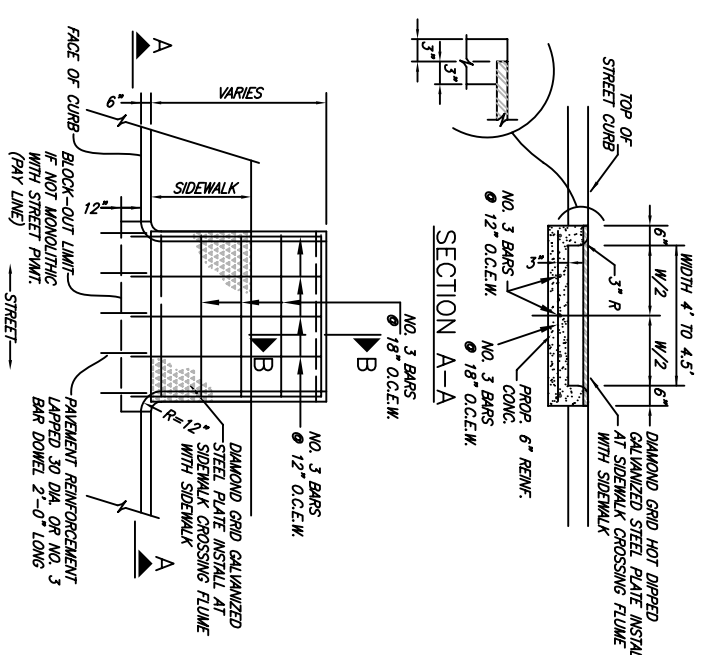
SECTION A-A

NOTE: USE SANDBAGS, DIVERSIONS OR OTHER APPROVED METHODS TO CHANNELIZE RUNOFF TO SEDIMENT BARRIER AS REQUIRED.

CONSTRUCTION ENTRANCE ROAD FOR EROSION CONTROL

PLAN

NO SCALE

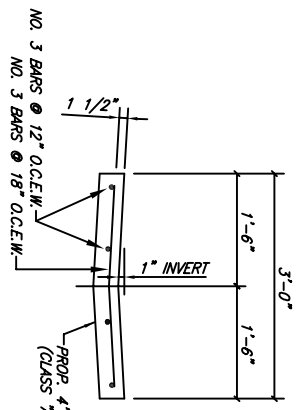


REINFORCED CONCRETE FLUME WITH CURBS

PLAN

STEEL PLATE FLUME COVER
 PLATE THICKNESS SHALL BE 5/8 INCHES
 BASE ON TOP P.S.I. LINE LOAD AND MAX. DEAD & LIVE LOAD DEFLECTION OF L/240. BOLT PLATE DOWN WITH BRASS BOLTS TO FLUSH WITH TOP OF PLATE AND SPACED AT MAXIMUM OF 12 ON CENTERS. 1/2\"/>

REINFORCED CONCRETE FLUME WITHOUT CURBS



- NOTES:
1. ALL VISIBLE SURFACES SHALL BE A TROWEL FINISH.
 2. 3/4\"/>

- CONSTRUCTION NOTES:
- 1) THE ENTRANCE SHALL BE MAINTAINED TO PREVENT TRACKING OF SEDIMENT ONTO PUBLIC RIGHT-OF-WAY. THIS MAY REQUIRE DRESSING WITH ADDITIONAL STONE AND REPAIR AND/OR CLEANSOUT OF ANY MEASURES USED TO TRAP SEDIMENT.
 - 2) WHEN NECESSARY, WHEELS SHALL BE CLEANED TO REMOVE SEDIMENT PRIOR TO ENTRANCE INTO PUBLIC RIGHT-OF-WAY. WASHING SHALL BE DONE ON AN AREA STABILIZED WITH CRUSHED STONE WHICH DRAINS INTO AN APPROVED SEDIMENT CONTROLLING STRUCTURE. USE SAND BAGS, GRATEL, BOARDS OR OTHER APPROVED METHODS TO PREVENT SEDIMENT FROM ENTERING ANY STORM DRAIN, DITCH OR WATER COURSE.
 - 3) ALL SEDIMENT SPILLED, DROPPED, WASHED OR TRACKED ONTO PUBLIC RIGHT-OF-WAY MUST BE REMOVED IMMEDIATELY.

NO.	ADD ENTRANCE CONSTRUCTION NOTES	BY	DATE
1	REVISION	JCH	06/07/06

CITY OF WYLIE, TEXAS

STANDARD CONSTRUCTION DETAILS

PAVING / DETAILS / EROSION

DATE: APRIL, 2005

SHEET
 STD-07_R